



Self Directed Support in Clackmannanshire and Stirling

Factsheet 3

Making a Support Plan

My assessment is finished – what happens next?

Your assessment is complete and you have decided your needs and your personal outcomes. There is now a need to develop your support plan.

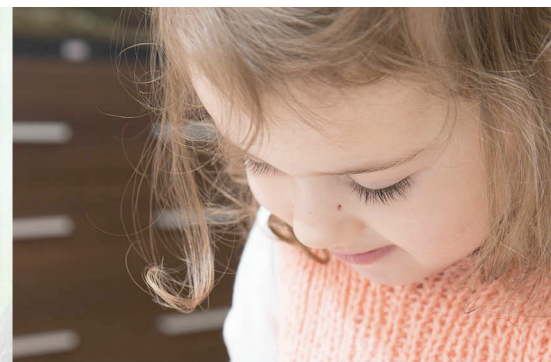
Everyone's plan will be different. You can be creative and use sources of support that work for you, provided they meet the needs and outcomes set out in your assessment of need.

Your "estimated" budget is to help you think of all the different ways you might arrange your support and meet those outcomes.

Writing your Support Plan

Your family, friends, your social care worker or anybody else who supports you can help you write your plan. The plan will state the outcomes you want. Things to consider include:

- What is important to you and your outcomes
- What you would like to change
- How will you arrange your support
- How will you spend your money
- How you will manage your support (including a plan if things do not work out)
- How you will stay in control of your life
- What you will do next and when





What kind of supports can I choose?

An important part of your plan is being able to choose what best helps you live your life the way you want to. Your plan might include some “traditional” services (e.g. help to get washed and dressed in the morning) and some services that are freely available to all people in the community (e.g. attendance at a gym or at a club of your interest).

You will find information about activities in your area/community in local directories. Also a website called Living it Up has a lot of information about activities in the Forth Valley area – you can find this at <https://discover.livingitup.org.uk/>

Who must agree your plan?

Once you have made your plan, it must be agreed by social services. It will be checked to see if it meets your outcomes and

- Uses the money sensibly and within the law
- Is clear about how you will manage your support
- Does not go over your estimated budget.

If your plan is agreed you can move straight to setting up your support and making the plan work for you

What if my support plan is not agreed?

If social services decide your plan needs changes before it can be agreed your social care worker will contact you. They will explain the reasons why it has not been agreed. For example, reasons might be your plan:

- Puts you and/or others at an unacceptable level of risk
- Goes significantly over your Estimated Budget
- Requires more detail

If this happens your social care worker will assist you to make some changes to make your plan work.

My plan is agreed – what happens next?

Once your plan is agreed social services will write to you and confirm your final budget. This will be the amount available to you to pay for the support you have chosen. Your plan can now start.

Get in touch

If you or your representative would like more information, please contact us

Clackmannanshire Council

Phone: 01259 450000

Kilncraigs
Greenside Street
Alloa
FK10 1EB

Stirling Council

Phone: 0845 277 7000

Municipal Buildings
8 - 10 Corn Exchange Road
Stirling
FK8 2HU