

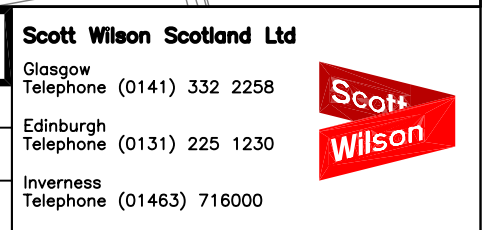
Drawing Title
Figure 2.1
 Scheme Design

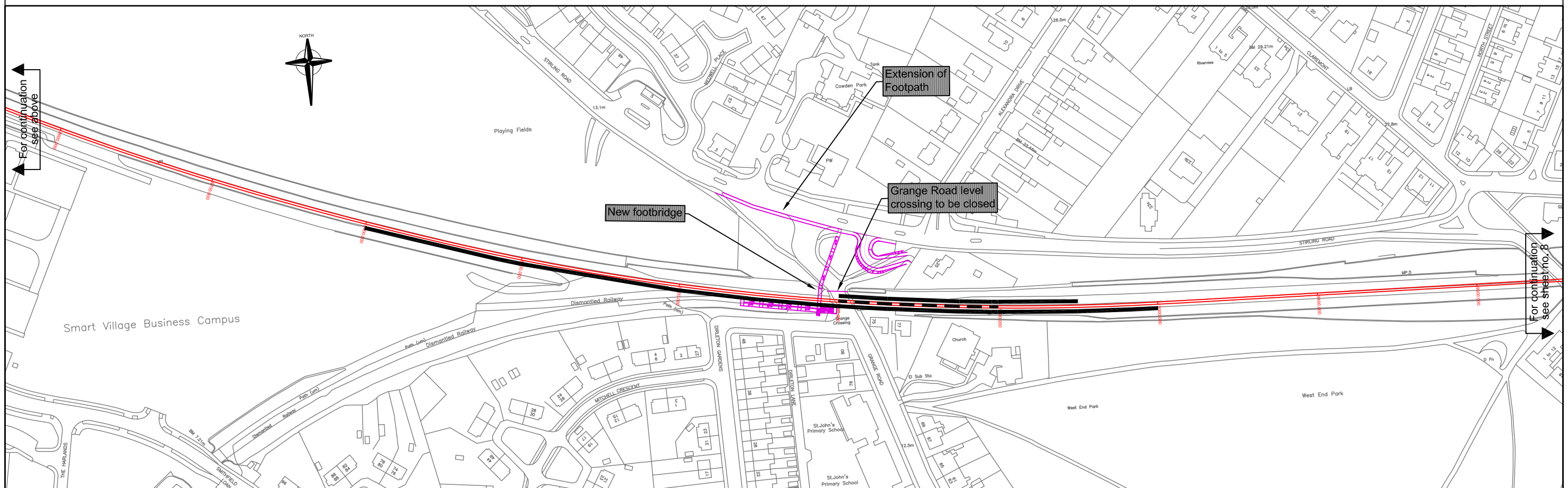
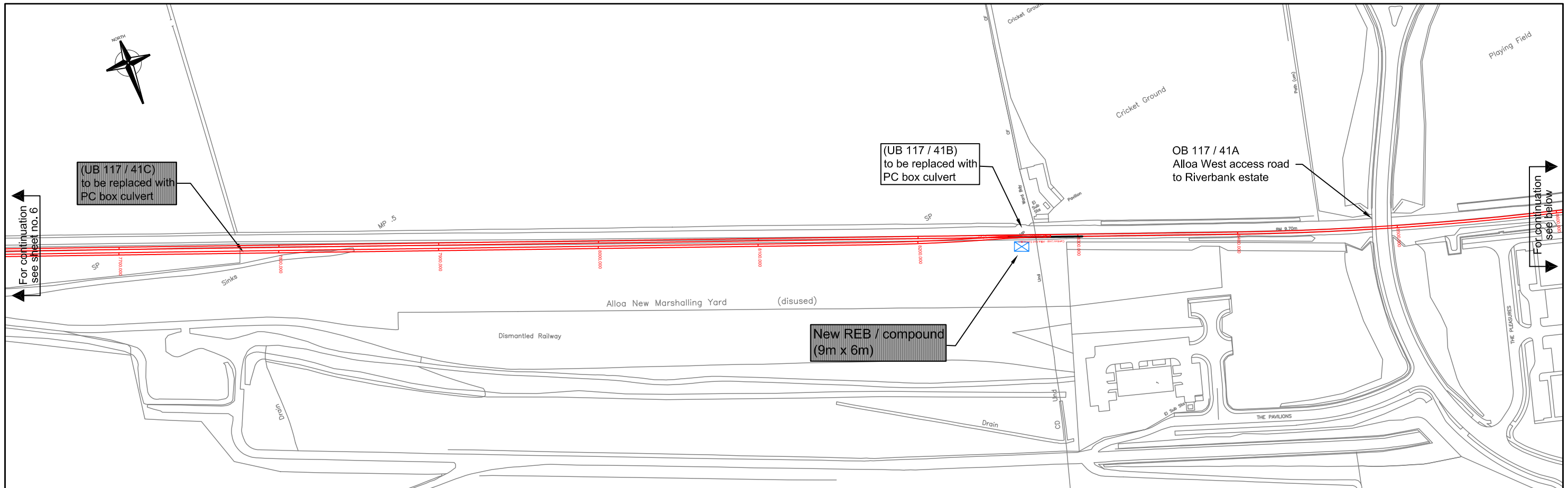
Stirling – Alloa – Kincardine
 Railway (Route Re-opening)
 and Linked Improvements
 (Scotland) Bill

Sheet 6 of 17
 Scale at A3 : 1:2,500

Drn	Appd	Revised
AL		
Chk	Date	Date
	FEB '03	

Scott Wilson Scotland Ltd
 Glasgow
 Telephone (0141) 332 2258
 Edinburgh
 Telephone (0131) 225 1230
 Inverness
 Telephone (01463) 716000






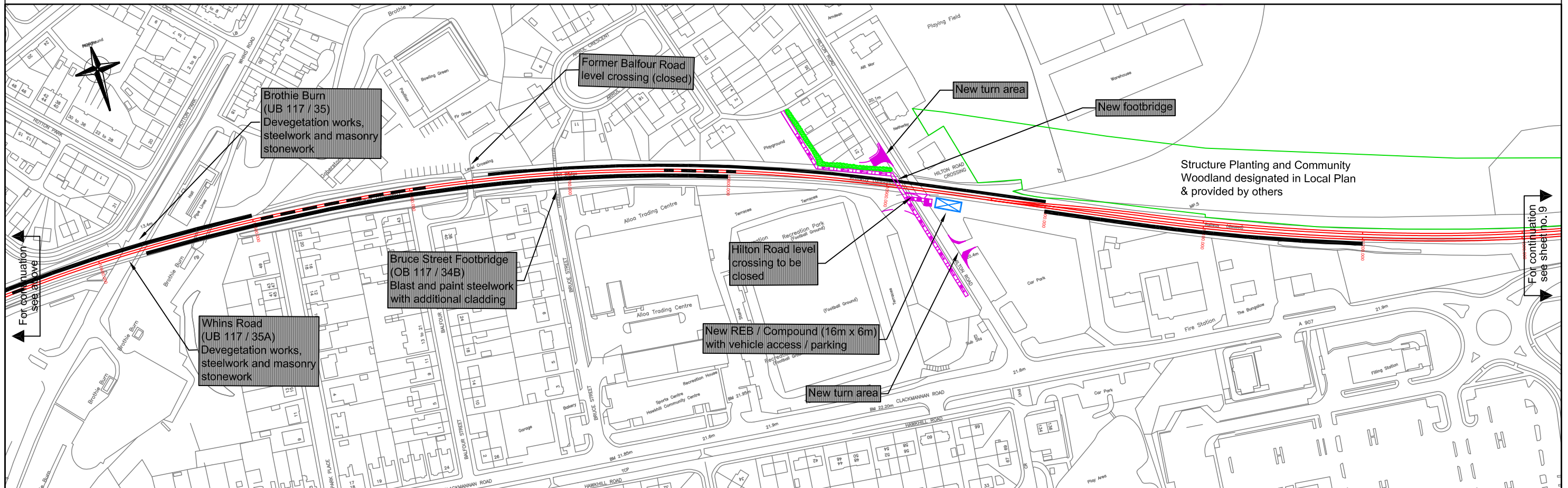
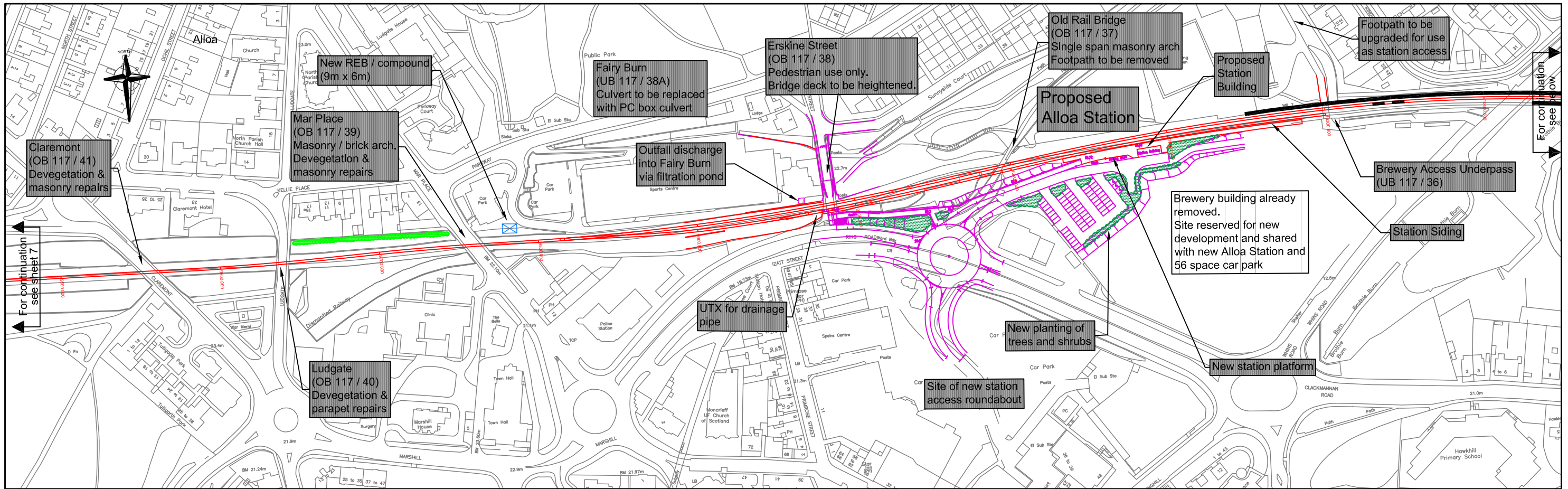
Drawing Title
Figure 2.1
 Scheme Design

Stirling – Alloa – Kincardine
 Railway (Route Re-opening)
 and Linked Improvements
 (Scotland) Bill

Sheet 7 of 17		
Scale at A3 : 1:2,500		
Drn AL	Appd	Revised
Chk	Date FEB '03	Date

Scott Wilson Scotland Ltd
 Glasgow
 Telephone (0141) 332 2258
 Edinburgh
 Telephone (0131) 225 1230
 Inverness
 Telephone (01463) 716000





Drawing Title
Figure 2.1
 Scheme Design

Stirling – Alloa – Kincardine
 Railway (Route Re-opening)
 and Linked Improvements
 (Scotland) Bill

Sheet 8 of 17

Scale at A3 : 1:2,500

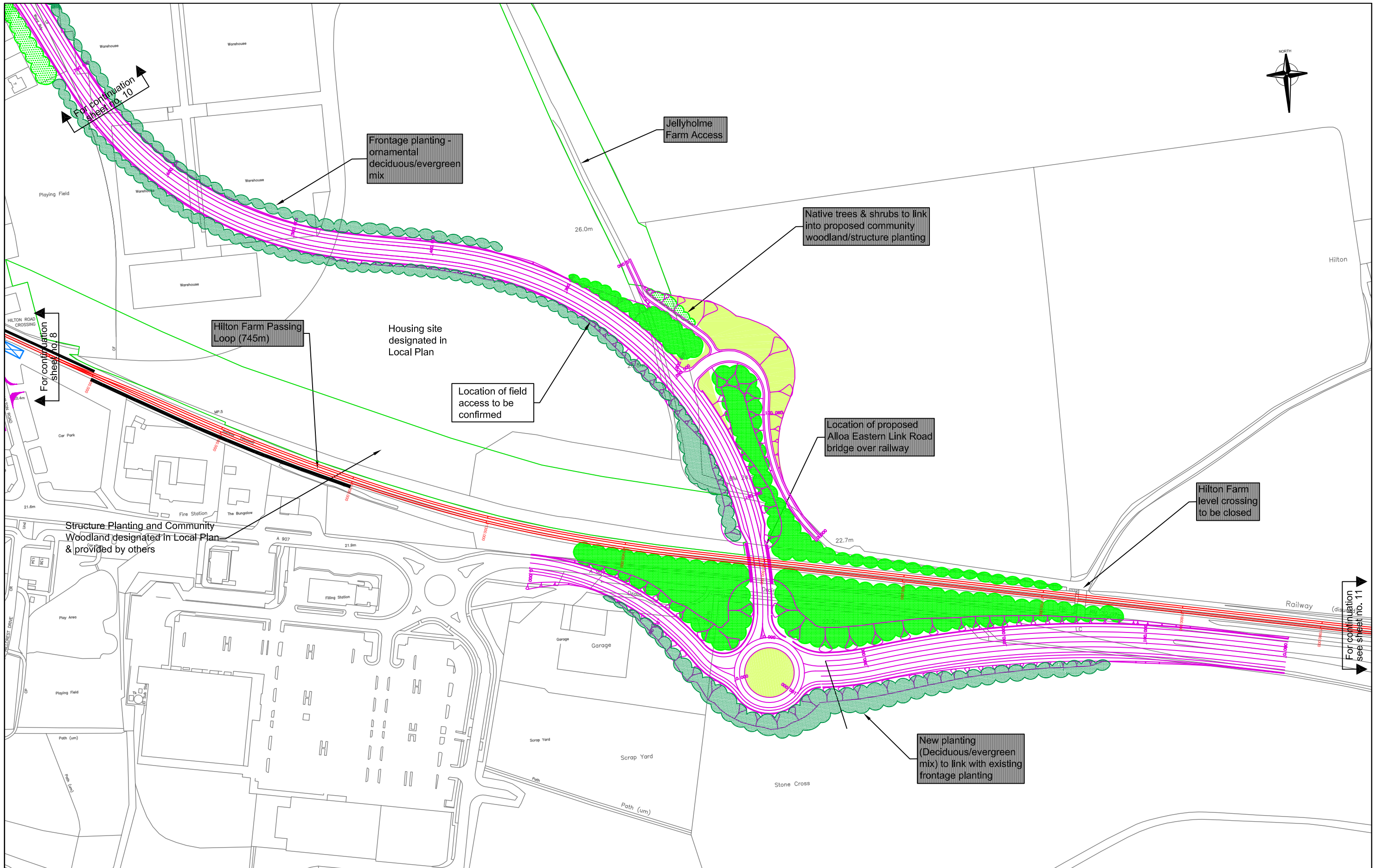
Drn	Appd	Revised
AL		
Chk	Date	Date
	FEB '03	

Scott Wilson Scotland Ltd

Glasgow
 Telephone (0141) 332 2258

Edinburgh
 Telephone (0131) 225 1230

Inverness
 Telephone (01463) 716000



Drawing Title
Figure 2.1
 Scheme Design

Stirling – Alloa – Kincardine
 Railway (Route Re-opening)
 and Linked Improvements
 (Scotland) Bill

Sheet 9 of 17		
Scale at A3 : 1:2,500		
Drn AL	Appd	Revised
Chk	Date FEB '03	Date

Scott Wilson Scotland Ltd
 Glasgow
 Telephone (0141) 332 2258
 Edinburgh
 Telephone (0131) 225 1230
 Inverness
 Telephone (01463) 716000

